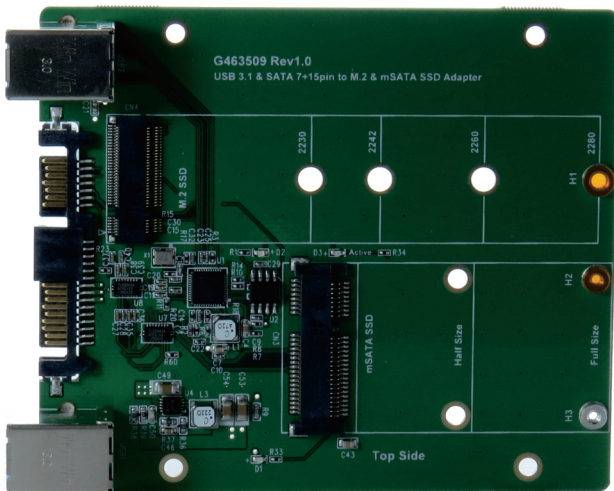


USB 3.1/10Gbps

ADAPTER

M.2 SSD & mSATA SSD to USB 3.1 & SATA III



Features

- M.2 SSD(SATA I/F) to USB 3.1/10Gbps & SATA III converter
- mSATA SSD to USB 3.1/10Gbps & SATA III converter
- Build in USB3.1 B-type connector
- Build in SATA 7+15pin connector
- Build in M.2 (NGFF) B-key Female connector
- Build in Mini PCI-e(mSATA) Female connector
- D1 LED on indicates M.2 / mSATA SSD power OK
- D2 LED on indicates USB3.1 for SSD active status
- D3 LED indicates M.2 / mSATA SSD active status

Specifications

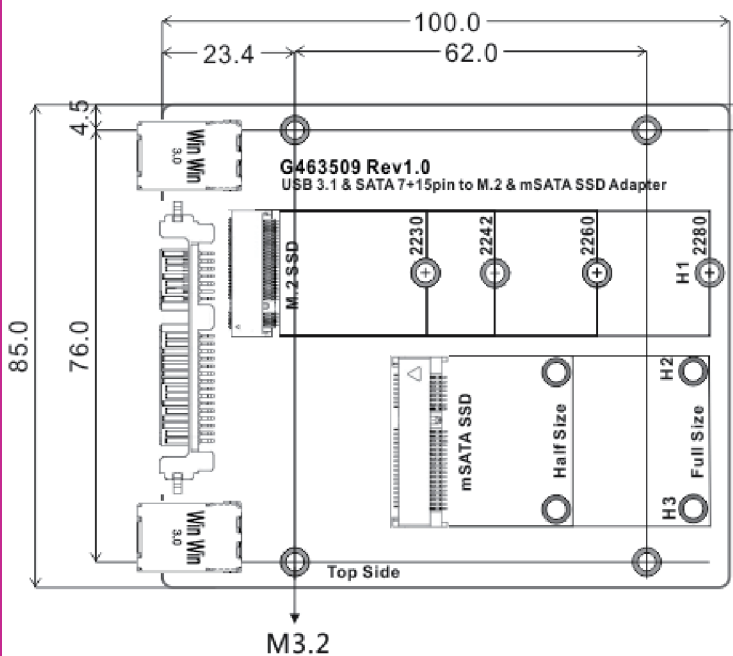
- Support SATA Reversion 3.2
- PCI Express M.2 Spec. Revision 0.7, Version 1.0
- Universal Serial Bus 3.1 Specification
- PWM synchronous buck converter Power IC for M.2 or mSATA SSD Device
- 3A maximum output current

Support M.2 Form factor

- Type 2280-D2-B-M: 80mm(L) x 22mm(W)
- Type 2260-D2-B-M: 60mm(L) x 22mm(W)
- Type 2242-D2-B-M: 42mm(L) x 22mm(W)
- Type 2230-D2-B-M: 30mm(L) x 22mm(W)

Support mSATA Form factor

- Half size mSATA : 26.8mm(L) x 30mm(W)
- Full size mSATA : 50.95mm(L) x 30mm(W)



USB 3.1

M.2
SSD

mSATA
SSD

